

What is Trout in the Classroom?

Trout in the Classroom is a conservation oriented environmental education program for students. Through the school year, students raise trout from eggs to fry and then release them into approved cold water streams and lakes. This act of raising, monitoring and caring for young trout fosters a conservation ethic within participating students and promotes an understanding of their shared water resources.

The Trout Life Cycle



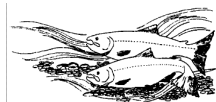
Trout lay their eggs in the gravel stream beds.

The eggs develop and hatch into alevins. They remain in the gravel & get their nutrients from their yolk sacs.



When their sacs are consumed the tiny fish, called fry, swim out of the gravel to find food.

The fry move out to the main current of the stream. They feed on insects and small animals & are called fingerlings.



Trout mature at age three & sometimes return to streams to spawn.

Mr. Shane & the Class of 2A would like to give a special "THANK YOU" to the following people for their donations, assistance and enthusiasm for our project:

- *Penn's Woods West Trout Unlimited
- *Pennsylvania Council of Trout Unlimited
- *PA Fish & Boat Commission
- *Mr. Shute & Ms. Hannagan (principals)
- *Mrs. Mazza & Mrs. Bookleiner (secretaries)
- *Mr. Marsh & the Custodial Staff
- *The Teachers/Staff of McKnight
- *The Parents of 2A & the McKnight families



Trout Links:

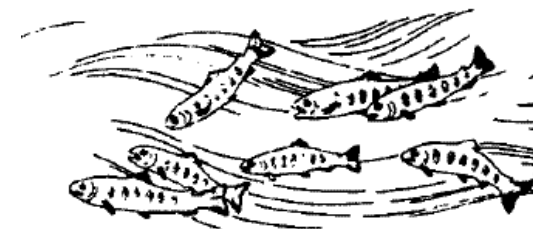
- [Trout Unlimited](http://www.tu.org) - www.tu.org
- [Penn's Woods West TU](http://www.pwwtu.org) - www.pwwtu.org
- [PA Fish Commission](http://www.fish.state.pa.us) - www.fish.state.pa.us
- [TIC Project](http://www.troutintheclassroom.org) - www.troutintheclassroom.org
- [Mr. Shane's Website](http://www.teachers.northallegheny.org/cshane) - www.teachers.northallegheny.org/cshane



McKnight Elementary's

Trout in the Classroom

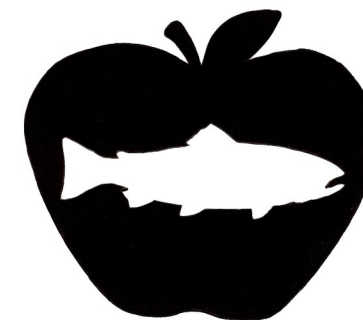
"FINNY FRIEND" RELEASE



Saturday, March 28, 2015

North Park/Latrobe Pavilion

1:00 PM



Sponsored by Mr. Shane & the 2014/2015 Class of 2A



(Eggs - Actual Size)

A Poem for the Fry

**Goodbye, goodbye,
We wish you goodbye.
We will miss you little trout fry!**

Take care of yourself in Pine Creek.
A safe place is what you can seek!
Predators, birds and bigger fish,
Might make you their favorite dish.

We want to see you grow and survive
Our wish is for you to stay alive.
We have raised and fed you in our tank,
So taking our advice can be your thanks.

**Goodbye, goodbye,
We wish you goodbye.
We will miss you little trout fry!**



(Eggs - Actual Size)

McKnight Elementary's "FINNY FRIEND" RELEASE

Saturday, March 28, 2015

1:00 pm - Welcome/Intro Mr. Shane

1:05 pm - TIC Project Overview

1:15 pm - Read Poem Everyone

Directions for Release

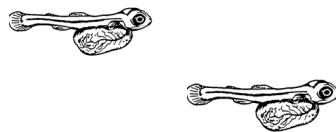
Distribution of Trout/Release

Trout Tickets - Red
(2A & Siblings)

Trout Tickets - Yellow
(K, 1)

Trout Tickets - Green
(2, 3)

Trout Tickets - Blue
(4, 5)



(Alevins - Actual Size)



(Trout Fry - Actual Size)

Directions for Release

- 1) When your sticker color is called, come to the fish station to receive your trout.
- 2) Find a safe & shallow spot along the lake to release your trout.
- 3) Tilt your cup slowly to allow some water from the lake in.
- 4) Submerge the cup and allow the fry to swim out carefully by itself.
- 5) Bring your cup back to fish station.

***We are releasing these trout fry only with permission from the PA Fish & Boat Commission.**



(Trout Fry - Actual Size)